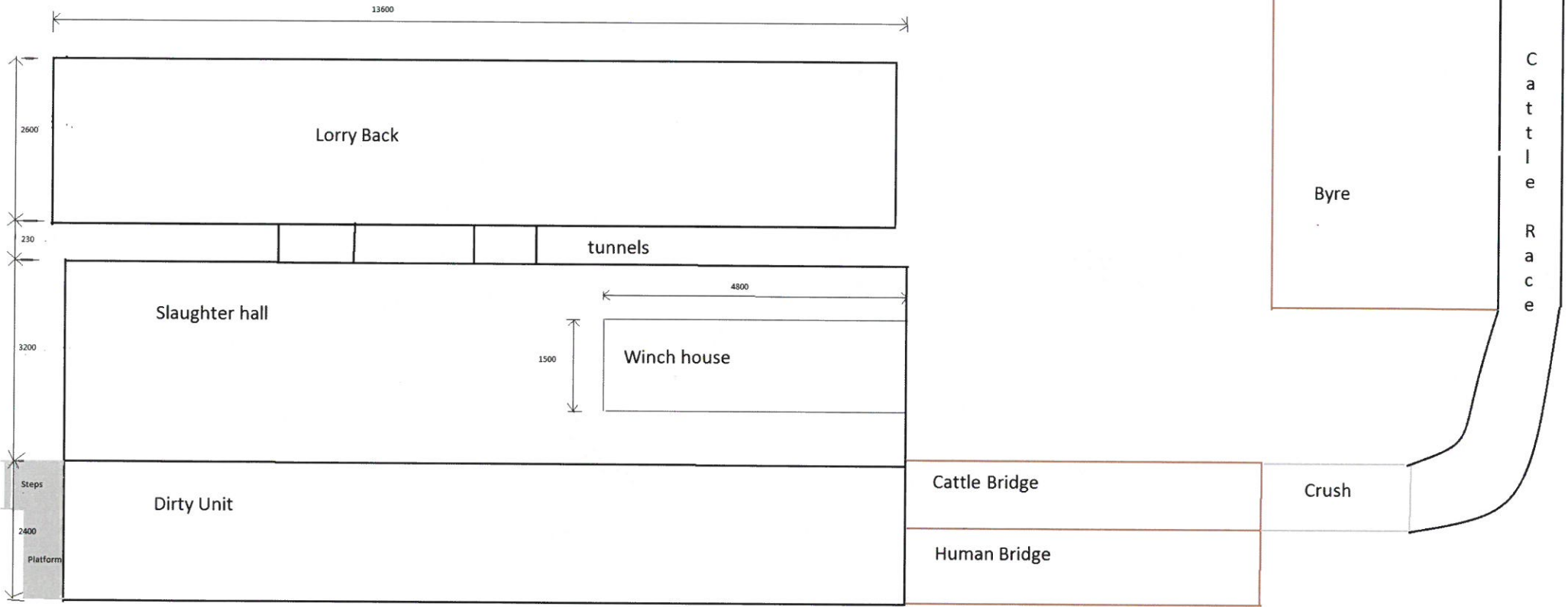
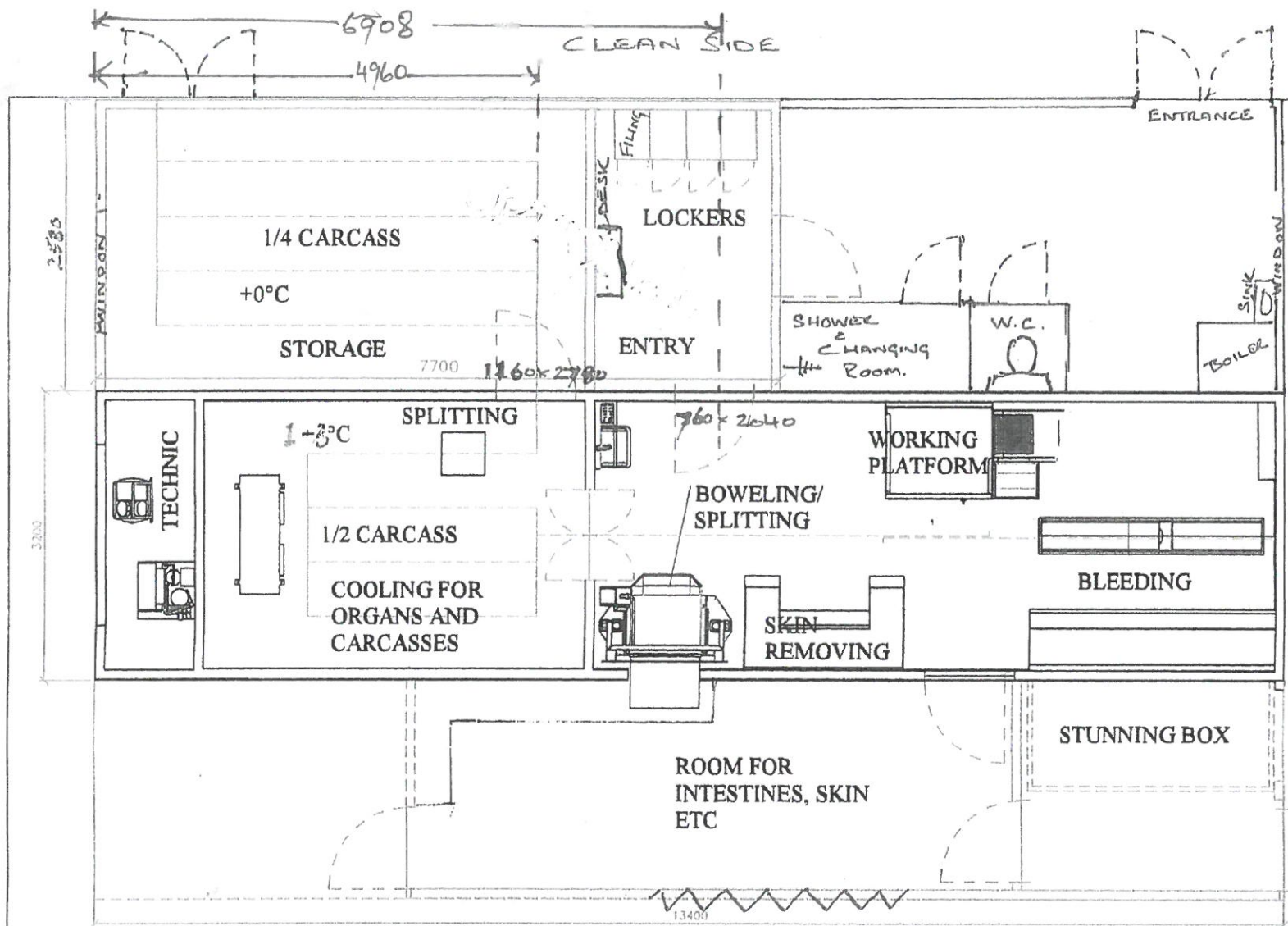


Hardiesmill Abattoir Plan view with tunnels Vs 3 dated 2nd Oct 2017.



Hardiesmill Abattoir - Site map. Vs 5 3rd Oct 2017





HARDIESN  
MODULAR  
MICRO-  
ASBATE  
V8.3.  
11.10.2016

CARCASS  
DOOR  
CUTTING  
1200x2800  
LEAF FRAME  
20mm all  
round  
OPENS OUT  
PERSONEL DOOR  
1760x2040  
OPENS IN.

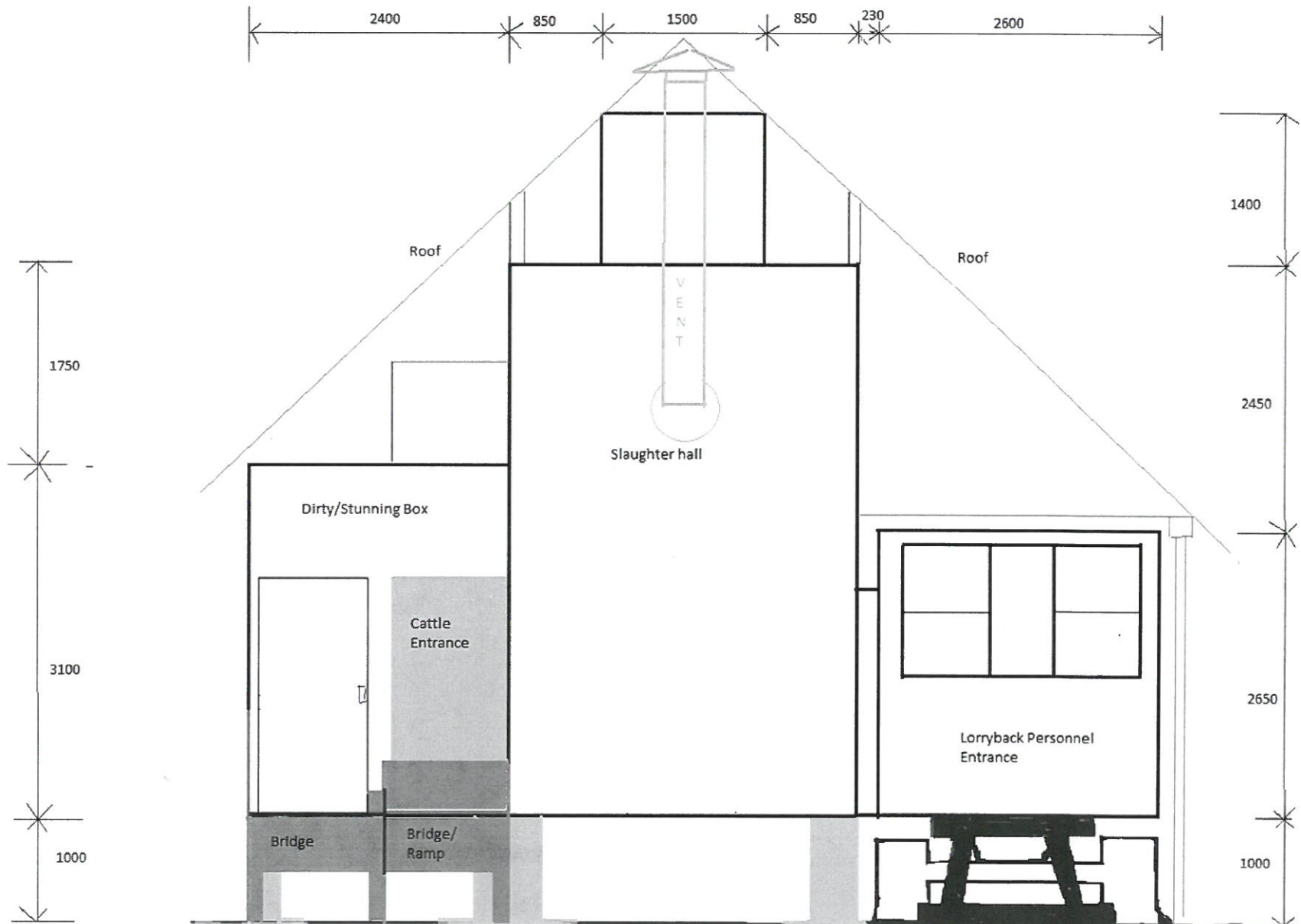
CAPACITY  
6-8 CATTLE/DAY

DIRTY SIDE

Unit/Type	Unit/No	Unit/1	Unit/2	Unit/3	Unit/4
SLAUGHTERHOUSE THOMSON 11.10.2016					
www.hardiesn.com 01-037 01-037 01-037					

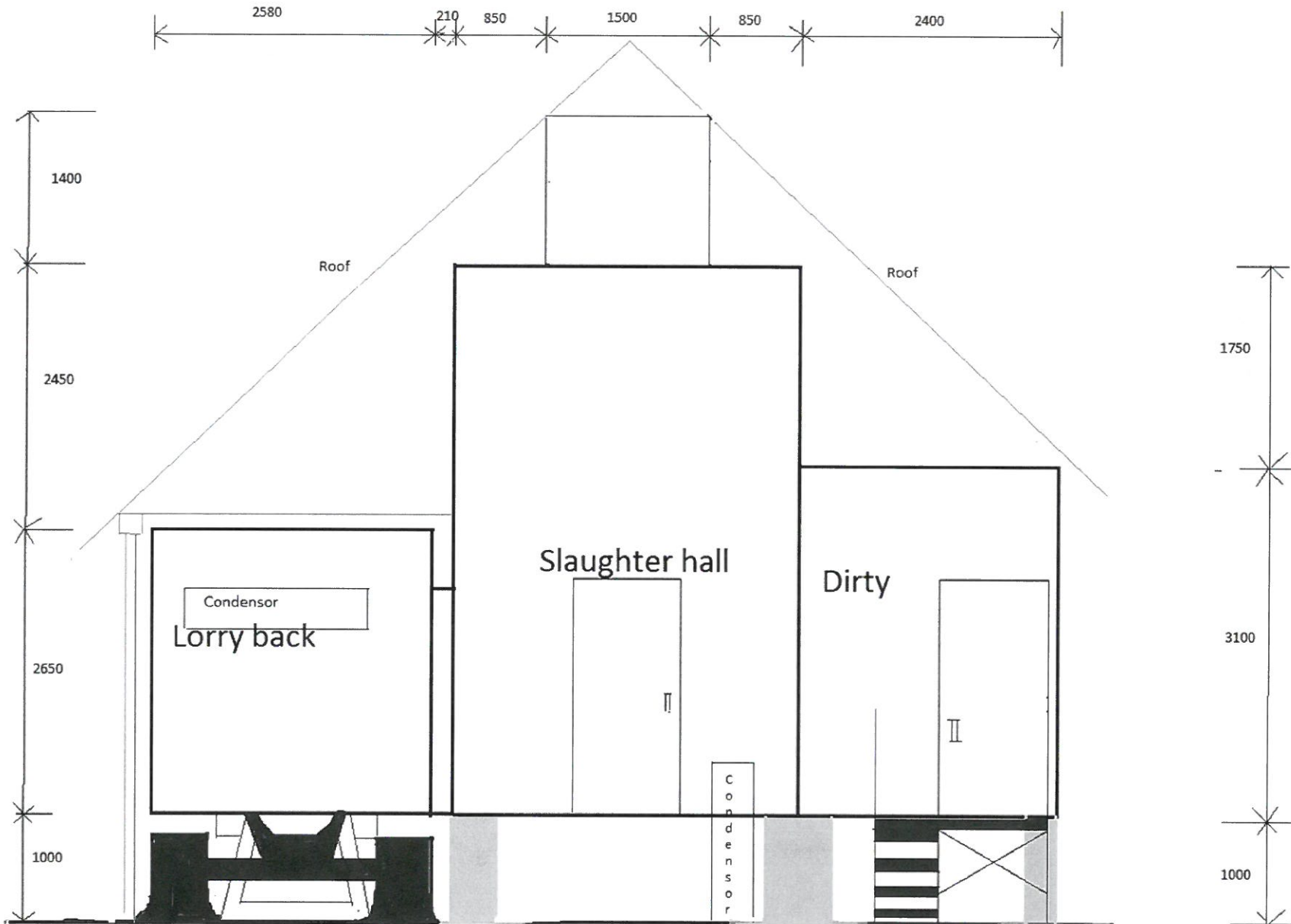
# Hardiesmill Abattoir from North End

Vs 3. dated 2nd March 2017



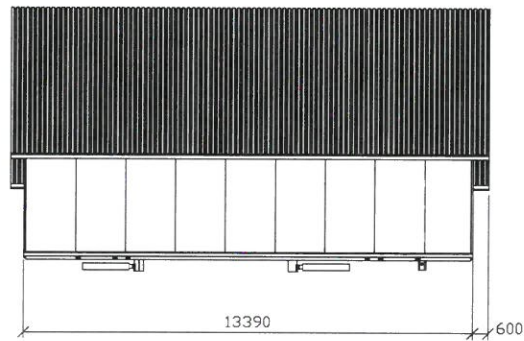
# Hardiesmill Abattoir from South (road) side

Vs 4 dated 2nd Oct 2017



# Directional plan

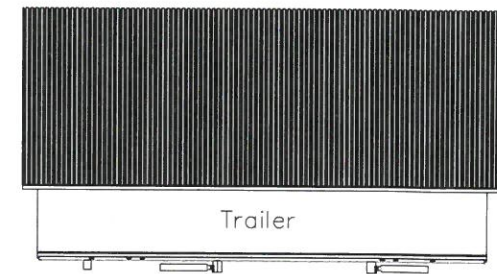
West side



South side



East side



Luon./työ	kuuti./ku	tariffi/rao	Wenustalon mallinetti	jakelu
Rakennusohje <b>LUUSIBAKENHUS</b> omakoti, maastop.				
Rakennusohjeen nimi ja osasto <b>SLAUGHTERHOUSE</b> <b>THOMCONT</b> NSL 2500.1			Pivustuksen nimi 4.7.2017	Mittakaava 1:40
Suunnittelija T. Palomäki	Piir. / T. Palomäki	Pöytä 1825-300	Maaston piiritys maabov@kometos.com	Muut 625-300
Keskustie 23 FIN-61801 KALAJOKI phone +358 (0)6 234 2200 fax +358 (0)6 234 2225				